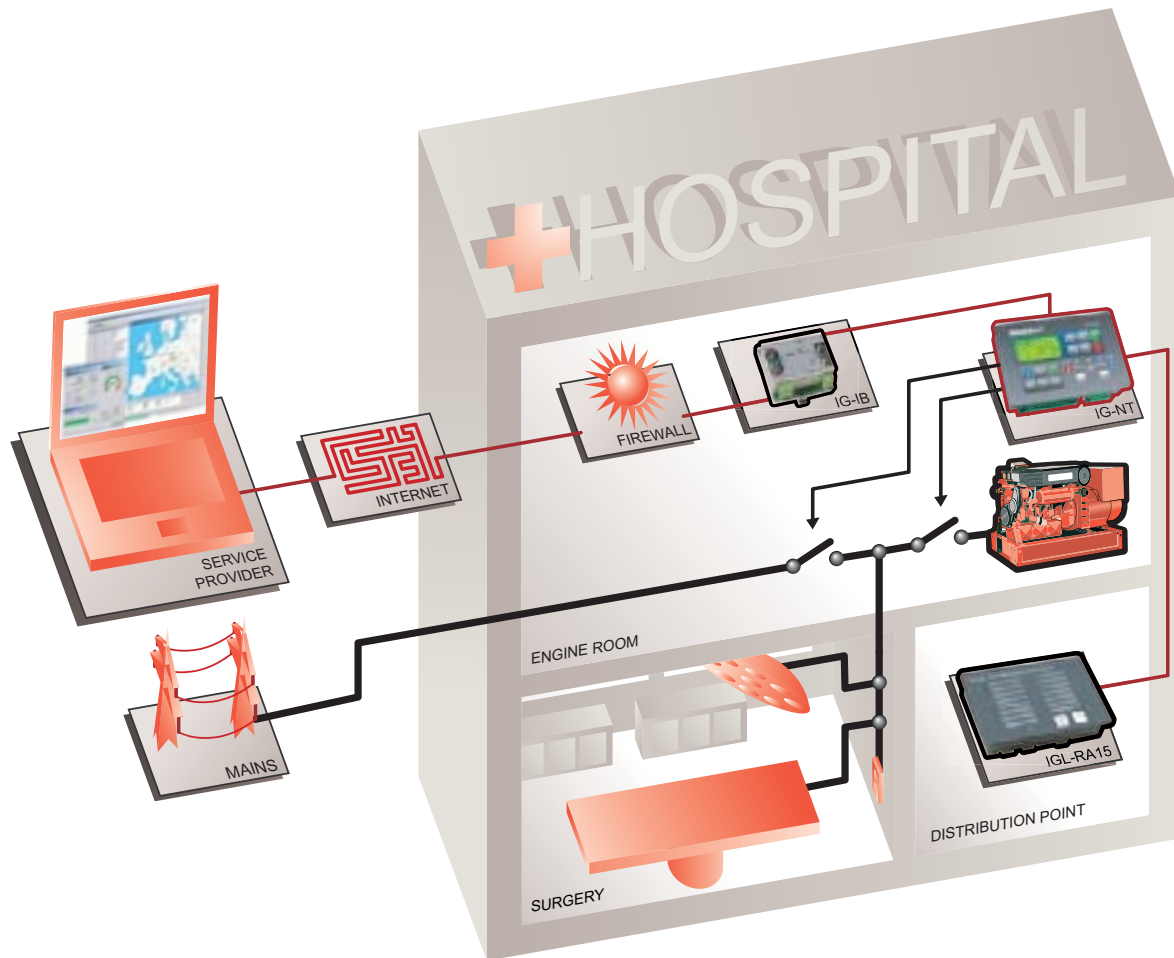


# Standby system with soft return

– remote supervision  
via Internet



## Description

- Stand-by emergency genset accomplishes power supply to essential load during power drop.
- Controller automatically starts the genset in case of mains failure and switches load to generator. When mains returns, it synchronizes the generator back, softly unloads it and stops the engine.
- Generator automatically synchronizes to mains in Test mode. Test mode can be used to check the genset condition and to provide uninterrupted power supply in case of expected mains failure.
- Status of the genset is displayed in the distribution point.
- Service contractor connected via Internet and IntelliSupervisor PC software has complete information on status and performance of gensets. Each important alarm immediately pops-up on PC screen.
- IntelliSupervisor is used for supervision of complete fleet of gensets located on many sites.
- History file with performance log stored in IG-EE allows easy backtracking and problem solving.
- Seamless communication with engine's electronic injection control unit, all important values and alarms are visible on screen of IntelliGen and stored to the history file in plain language.

## Scope of supply:

- 1× IG-NT
- 1× IG-AVRi + IG-AVRi-TRANS/LV
- 1× IG-IB

**STANDBY SYSTEM  
WITH SOFT  
RETURN – REMOTE  
SUPERVISION VIA  
INTERNET**